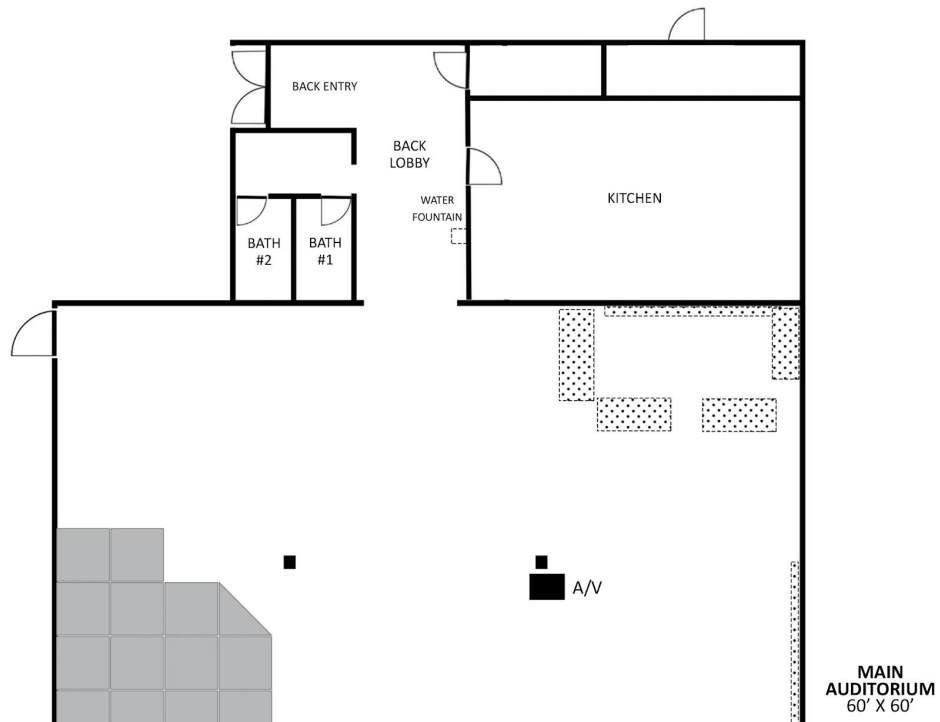


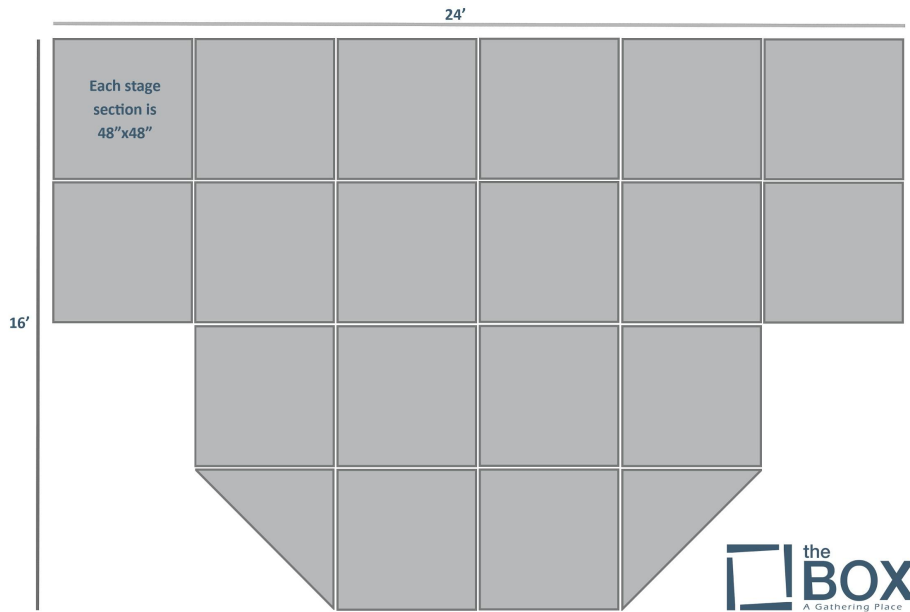
## Diagrams & Details

*Last Updated: 09/15/2019*

ITEM	DETAILS
<b>Main Meeting Room</b>	60'X60' Wall to Wall
<b>Restrooms</b>	2
<b>Stage Platform Size</b>	24'x16' (see Stage Diagram) Each section is 48"x48"
<b>Stage Backdrop (w/ grid system)</b>	192" (width of grid) X 120" (stage to ceiling)
<b>Center Banner Section</b>	48"x 96" prepped for banner w/ pole pockets top and bottom



### Stage Diagram



### Building Diagram